

PART OF THE NE.1/4, OF SECTION 33, T.6N., R.2W., S.L.B. & M.

747

# MOON OWL RANCH SUBDIVISION

IN WEST HAVEN CITY

TAXING UNIT: 533

SCALE 1" = 30'

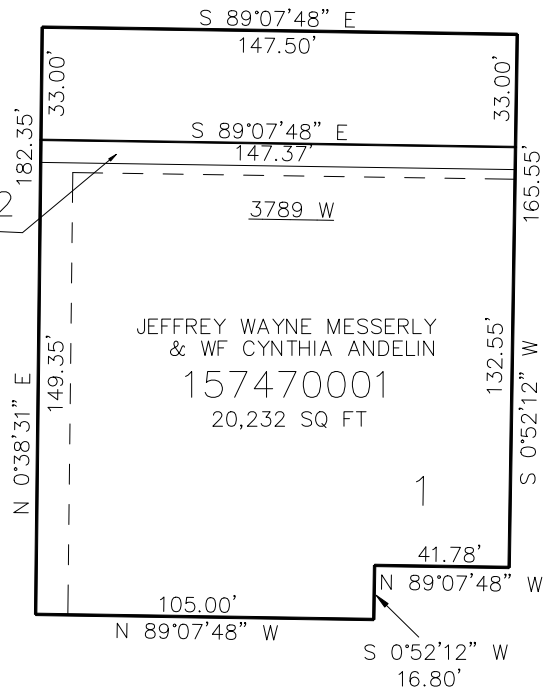
SEE PAGE 88

## 2550 SOUTH ST

WEBER COUNTY  
157470002  
1,032 SQ FT

SEE PAGE 88

SEE PAGE 88



SEE PAGE 88

10' UTILITY & DRAINAGE EASEMENTS EACH  
SIDE OF PROPERTY LINES AS INDICATED  
BY DASHED LINES EXCEPT AS OTHERWISE  
SHOWN.

FOR COMPLETE ENC DATA SEE  
ORIGINAL DEDICATION PLAT IN  
BOOK 90, PAGE 45 OF RECORDS.